

An ISO 9001 : 2015 Certified Company



Shine-Pro™
Brass Industries

**Manufacturer of
Brass Components & Fittings**



About Us

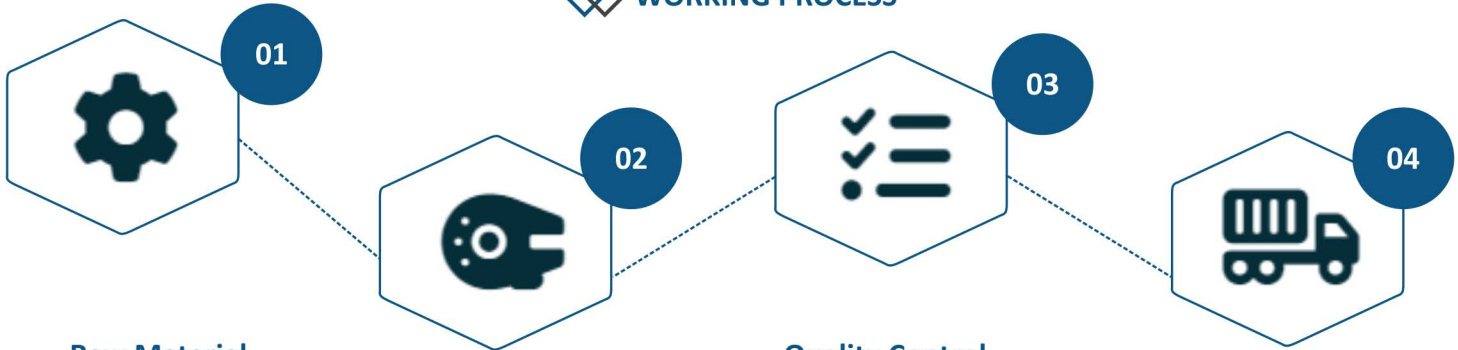
Global Supplier of Brass Components & Fittings

We are pleased to introduce Shine-Pro Brass Industries as one of the leading Brass Components & Fittings manufacturer, supplier & exporter in Domestic & International Market. With experience and expertise of more than one decade and having quality certification of concern authority, our best quality products and effective client services has put our name as the well known brass products manufacturer and supplier among leading brass companies of India.

All brass components are manufactured under supervision of highly qualified and technically experienced engineers on most modern machines as per our customer's drawings and specifications and as per national & international standards.

✓ **12+ Years of Experience** ✓ **Skilled & Experienced Team Members** ✓ **Competitive Price & On Time Delivery**

WORKING PROCESS



Raw Material

First step of production is to purchase raw material (Brass Rods) from our trusted suppliers. Material has to be purchased as per standard grade.

Manufacturing

Manufacturing process are likely to be threading, drilling, facing, milling and cutting. Expert engineers are responsible for checking quality of products.

Quality Control

After product produced, it has been send to QC Department. Quality Control supervisor will check all dimensions and measurements

Packing & Dispatch

Each order is sent to packing unit. The completeness of whole order can be checked here and then the whole order is dispatched.

Our Mission

To continuously strengthen and upgrade our manufacturing processes, quality systems and people competencies by training & education and providing a safe work place.

Our Vision

To strengthen our position in the market by delivering high-quality products. Further, we are developing our expertise to always remain ahead in technological advances.

Our Commitment

To understand and exceed the expectations of our valued customers, while delivering high quality products with competitive price to their most demanding requirements.

WHY CHOOSE US

Delivering Excellence in Manufacturing Of Brass Components

Shine-Pro Brass Industries is the foremost company engaged in Manufacturing & Export of Brass Components and Fittings, providing best services to the very highly profiled organizations & OEMs in India as well abroad countries.



Modern Infrastructure

Shine-Pro's state-of-the-art in-house manufacturing facility is equipped with latest machineries and equipment's.



Quality Assurance

we are dedicated to deliver products of highest quality to meet and exceed our customers' expectations.

All brass components are manufactured under supervision of highly qualified and technically experienced engineers on most modern machines as per our customer's drawings and specifications and as per national & international standards. With state of the art machineries, skilled labour, sufficient measuring instruments and well experienced management, we always serve better quality at best prices. We are committed in our efforts to give you total satisfaction in terms of products and services.

We Provide Best Manufacturing Services

We believe our core values of innovation, integrity, client satisfaction and intellect differentiate us from others. Our focus is to maintain & developed a measurable client satisfaction.



Customized Products



Skilled Team



Quality Products



Optimized Cost



Safety & Reliability



On-Time Delivery



2012

Established Since



100%

Satisfied Clients



11+

Countries Served

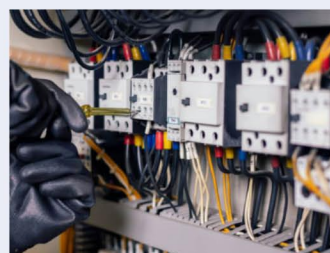
APPLICATION

Industries We Serve

We serve a wide range of industries, we have adapted our services to suit a range of different industries. Some of the industries that we serve are mentioned below.



Agriculture



Electrical



Oil & Gas



Plumbing

BRASS SANITARY PARTS



Brass Tee



Brass Elbow



Brass Hose Nipple



Brass Connector



Brass Bush



Brass Extension Nipple

Description

The Brass Sanitary Parts manufactured by us are made from quality brass materials which ensure durability and quality. Our wide gamut of Brass Sanitary Spare Parts include Brass Tee, Brass Elbow, Brass Union, Brass Socket, Brass Coupling, Brass Bush, Brass Plug, Brass Stop Plug, Brass Adapters, Brass Couplers, Male/Female Pipe Fittings, Hexagonal Reducing Nipple, Stop Plug, Bush, Male/Female Adaptors, Female Connectors and Hose Jointer.

Type of Sanitary Parts :	<ul style="list-style-type: none"> » Brass Extension Nipple » Brass Hose Nipple » Brass Double Nipple » Brass Grove Nipple » Brass Sanitary Socket 	<ul style="list-style-type: none"> » Brass Adapters » Brass Reducer » Brass Spindle » Brass Connector » Brass Hex Nut 	<ul style="list-style-type: none"> » Brass Bush » Brass Elbow » Brass Stop Plug » Brass Coupling » Brass Sanitary Fittings
Application :	Air Oil Water Hydraulic Fluid Lubricant and other applications which use brass, copper, and iron pipe.		
Material :	<ul style="list-style-type: none"> » IS 319 Brass Free Cutting. » As per BS-249 Free Cutting Brass Material. » High Grade Free Cutting. » Any special brass material composition on request. 		
Threads :	<ul style="list-style-type: none"> » ISO metric, mm, PG, BSW, BSP, BSB, BSF, BA, NPT, NPTF, UNC, UNF, UNEF, etc. » Any threads as per customer's design 		
Size :	» Any sizes available as per customer drawings & specification or samples.		
Finish & Coating :	» Natural Brass, Nickel Plated, Chromium Plated, Electro Tin Finished and SS Plated.		

BRASS GAS PARTS



Brass Gas Valve - Male



Brass Gas Valve - Male



Brass Gas Valve - Female

Description

We Manufacture and Export Brass Gas Fitting Parts : Male - Female Elbow, Flare Female Elbow, Single Barb Elbow, Flare Male Elbow, Gas Fitting Connectors, Barb T - 3 way, Compressor Female Elbow, Compressor Male Brand - T, Flare Equal Elbow, Gas Fittings Plug, Compressor Male elbow, Equal T, Compressor Union T, Force Barb - T, Brass Canteen Burner Valves, Main Line Shut off Valves, Brass Needle Control Valves, Brass F Valves, Straight Nozzle Valve, Brass Non Return Valve, Brass Lpg Cylinder Valve Fittings, Brass Gas Valve, Brass LPG Equipments.

Application :	<ul style="list-style-type: none"> » Oil And Gas Sector » Pipeline Systems » Refineries And Petrochemical Plants » Safety Systems » Water & Steam industries
Material :	<ul style="list-style-type: none"> » Free Cutting Brass IS 319 Type (I) or » Free Cutting Brass as per BS 249 Type (I) or » Forged Brass » Any Special Brass Material Composition as per customer requirements.
Threads :	<ul style="list-style-type: none"> » ISO metric, mm, PG, BSW, BSP, BSB, BSF, BA, NPT, NPTF, UNC, UNF, UNEF, etc. » Any threads as per customer's design
Features :	<ul style="list-style-type: none"> » Knob Operated Easy To Install Forged Brass Body Brass Nozzle
Size :	<ul style="list-style-type: none"> » Any sizes available as per customer drawings & specification or samples
Finish And Coating :	<ul style="list-style-type: none"> » Natural, Nickel Plated, Tin Plated » Any type of plating and coating as per customer specification

Brass Agriculture Parts



Description

We are privileged to offer wide range of Brass Agriculture Parts. The material used in manufacturing of Brass Agriculture Parts ensures high durability and tensile strength. These Brass Agriculture Parts are used in agricultural field, and are free from rust. Available in unique dimensions we develop the Brass Agricultural Parts as per customers' drawings and samples. Excellent management team, production team & marketing team expertise with intensive market analysis enables us in manufacturing a range, which stands high on accuracy and is offered at competitive rates.

Material :	<ul style="list-style-type: none"> » Free Cutting Brass IS 319 Type (I) or » Free Cutting Brass as per BS 249 Type (I) or » High Grade Free Cutting Brass » Any special brass material composition as per customers requirements.
Threads :	<ul style="list-style-type: none"> » ISO Metric (MM Threads) » BA Threads » DIN Threads » BSW Threads (inches) » UNC & UNF Threads » GB Threads » Any threads as per custom Specified.
Features :	<ul style="list-style-type: none"> » Superior in Quality » Non-Corrosive in Nature » High Tensile Strength » High Quality Surface Finish
Finish And Coating :	<ul style="list-style-type: none"> » Natural, Nickel Plated, Tin Plated, Natural Brass » Any coating as per customer specification.

Brass PPR & CPVC Inserts



Brass PPR Inserts



Brass CPVC Inserts



Brass Hex Inserts - Male

Brass PPR Inserts

We are manufacturing wide range of Brass PPR Inserts in different size, material, thread and type and exporting it to various countries. Our comprehensive range of Brass PPR Inserts include male ppr insert, female ppr insert and more. The brass PPR insert is a mechanical threaded nut or adapter. It is used with random polypropylene copolymer (PPR) plastic pipe fittings to create a secure connection between the pipes without a leak or damage. This insert type is primarily suitable for PPR pipe fittings and plastic objects.

Brass CPVC & UPVC Inserts

Leveraging on our vast industry experience, we are offering a broad spectrum of Brass CPVC & UPVC Inserts. These components are best suited for fitting applications in machines, pipes and many more. Under the proper supervision of our skilled professionals, offered components are manufactured with high precision by making use of quality approved brass. Available in numerous dimensions, these Brass CPVC & UPVC Inserts are provided to the clients at reasonable prices.

Application :	Potable Water Supply Lines Heating Air Conditioning Systems Electrical And Instrumentation Lines Chemical Transportation Agriculture Pipes, etc
Type :	» Straight Unidirectional Diamond Cross Knurling » Any type as per customer's requirement
Material :	» Free Cutting Brass IS 319 Type » Free Cutting Brass as per BS 249 Type (I) » High Grade Free Cutting Brass » Any Special Brass Material Composition as per customer's requirement
Features :	» Durable » Corrosion-Resistant and Rust-Proof » Sturdy construction and longer life » Resistant To Heat » High Endurance & Tough Quality
Threads :	» NPT BSPT BSP ISO standards » Any threads as per specifications
Size :	» 3/8" To 3" in diameter and 3/8" to 5" in length » Any size available as per customer specification and drawing samples
Finish And Coating :	» Natural, Golden, Chrome Plated, Nickel, Tin Plated » Any coating as per customer specifications

Brass Fire Safety Parts



Brass Sprinkler



Brass Fire Safety Valve



Brass Fire Hose Coupling

Description

We are engaged in manufacturing and exporting broad range of Fire Safety Parts which are tested by an independent third party to ensure industrial standard norms. It is required to not only follow some of regulation and codes to protect your industrial components but to take extra prevention steps for protecting your industrial space. Fire Safety Parts are highly applicable for any type of accidental situation. Ensure Safety and Security of your industrial and commercial area by maintaining fire protection equipment with required fire safety parts. The manufactured range of Fire Safety Parts are globally approved and available in different material, sizes, types, plating and many other configurations based on custom specification and requirements..

Application :	<ul style="list-style-type: none"> » Fire Fighting Equipments » Airport (ARFF) » Industrial » EMS » Hazardous Materials » Petro-Chemical 	<ul style="list-style-type: none"> » Mining » Marine » Shipping » Medical » Specialty Vehicles » Fire EOMS
Material :	<ul style="list-style-type: none"> » IS 319 Brass Free Cutting » Brass BS 4183, BS 3643, BS93 » Brass IS 1367/1366 » High Grade Free Cutting » CDA 360 Brass Alloy » As Per Customers Specified Compositions 	
Threads :	<ul style="list-style-type: none"> » ISO metric, MM, PG, BSW, BSP, BSB, BSF, BA, NPT, NPTF, UNC, UNF, UNEF » Any threads as per customer's design 	
Length / Size :	<ul style="list-style-type: none"> » As per customer specification 	
Finish And Coating :	<ul style="list-style-type: none"> » Natural, Nickel Plated, Tin Plated, Chrome, Electrolytic Copper » Any coating as per customer specification 	

Brass Electrical Components



Brass Neutral Links



Brass Fuse Parts



Brass Pins

Description

We are manufacturing all kinds of Brass Electrical Components, Brass Electrical Parts and Brass Electrical Fittings like Electrical Plug Pins, Sockets Pins, Brass Electrical Components, Brass Terminal Block, Brass Connectors, Brass Contacts and more. Brass Electrical Components are consumed in various applications like Toggle Switches, Modular Switches, Switchgears, Fuse Switches, Plug Pins & Sockets and many Electrical & Electronics Equipment or Parts.

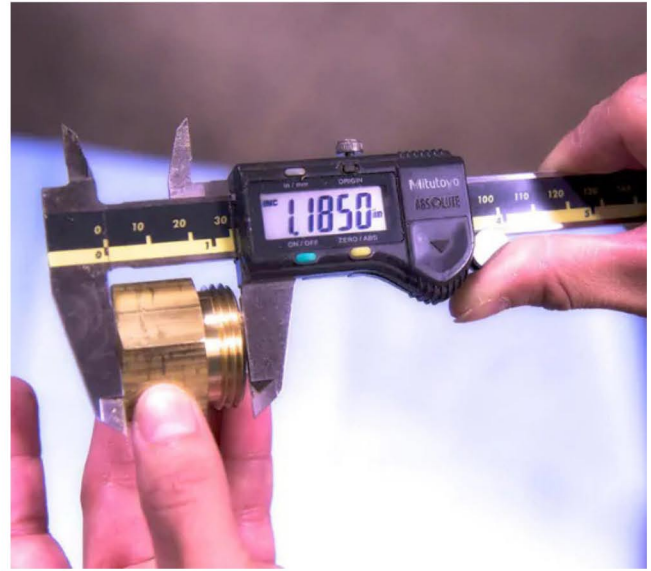
Types :	Electrical Insulating Components Auto Electrical Parts And Equipments Electrical Terminals Electrical Sockets Neutral Links Panel Board Accessories Electrical Pins Switch Gear Accessories Terminal Blocks
Application :	Electrical & Electronic Industry Automobile Industry Telecommunication Solar Industry Engineering Industry Power Generation Industry Medical Industry Defence Industry
Material :	<ul style="list-style-type: none"> » Free Cutting Brass IS 319 Type (I) or » Free Cutting Brass as per BS 249 Type (I) or » High Grade Free Cutting Brass » Brass – BS 2872 CZ 112 » Copper – BS 2872 C 101, 102 » Brass CDA-360 » Any Special Brass Material Composition on Request.
Threads :	<ul style="list-style-type: none"> » ISO Metric, PG, BA, BSW, UNC, UNF, BSP, BSPT, NPT, JIS, DIN & GB Standard » Any International standard type as per requirement.
Size :	» Any size available as per customer specification and drawing samples.
Finish And Coating :	» Natural, Electro Tinned, Nickel, Chrome, Silver, Gold, Zinc Blue, etc.

QUALITY ASSURANCE

High Performance With High Quality

Superior quality is the primary concern at Shine-Pro Brass Industries. We strictly adhere to stringent quality management systems in order to facilitate an error free production from every stage. Our entire manufacturing process is monitored by a team of well professionals having years of experience behind them. A team of trained supervisors and quality control inspectors ensures that the quality is maintained at all the stages of production.

Our target is to provide zero defect products to our customer, which is remarkable and we firmly believe into it. To meet the global demand we take care at every stage right from raw material purchase to finished goods. We always strive to provide our customers with best quality products with zero compromise and 100% satisfaction.



REASON TO CHOOSE SHINE-PRO

Quality Control

To achieve the maximum standard, our quality control team continuously monitors the products and user requirement right from the production stage up to the final dispatch. Due to strict quality control procedures our customers are ensured that their requirements are met accurately and consistently. For ensuring products are free from all kind of faults, we test our products with rigorous controls along with supplementary test like process control, assembly line control, quality control, material control, dimensional control, leakage and pressure control.

Modern Infrastructure

Our manufacturing unit is equipped with latest machines and technology to produce zero-defect and high performance Brass Components. The sophisticated production facilities enable us to execute orders of various sizes and specifications. The infrastructural facilities are also equipped with sophisticated packaging equipment and machinery to ensure quality packaging that ensures safety of products during transit and delivery. To ensure we are able to produce product as per market requirements, we keep upgrading our machines and incorporate newer ones when required.



 **QUALITY POLICY****Quality Without Compromise**

Our Prime Focus is the satisfaction of our honourable customers & our prime motto is to meet customer's requirements effectively & creating values for all, our customers, our Company & towards Society.

**Instruments**

Instruments are heartbeats of industry, to assure good quality, instruments are required. Company has invested a good amount to have majority of inspection instruments and gauges along with the profile projector and other sensitive instruments.

**Inspection**

Company has unique inspection facility to achieve the goal to zero defects and rejection of any products manufactured. Well experienced and regularly trained engineers carry out the inspection on each individual product.

**Health And Safety Policy**

Health & Safety of all the employees is utmost importance at Shine-Pro Brass Industries. We aim to eliminate, control or reduce the workplace hazards & associated risk of illness or injuries to the employees, Customers, Contractors & all those who might be affected by our business activities. We are committed to ensuring the safety of our employees, customers and everyone else affected by Our business' activities.

**Packing & Dispatch**

Packaging is the most important aspect. After inspection, each order is directed to a particular packing location. The completeness of whole order can be checked here. Then the packing list gets printed and the whole order is packed and dispatched.



Shine-ProTM
Brass Industries

📍 Plot No.3245/A, Road No. A, G.I.D.C.,
Phase-3, Dared, Jamnagar - 361 004,
Gujarat - INDIA

☎ **+61 43043 1236**
☎ **+91 98252 80544**
☎ **+91 85302 44391**

✉ info@shineprobrass.com
✉ sales@shineprobrass.com
🌐 www.shineprobrass.com